



CRANBURY TOWNSHIP

Middlesex County, New Jersey

CRANBURY TOWNSHIP HISTORIC SITES SURVEY UPDATES 2017-2023

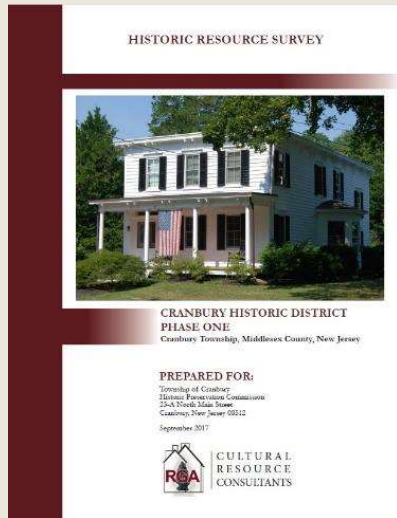


RICHARD GRUBB & ASSOCIATES
Historic Architecture • Archaeology • Historical Research

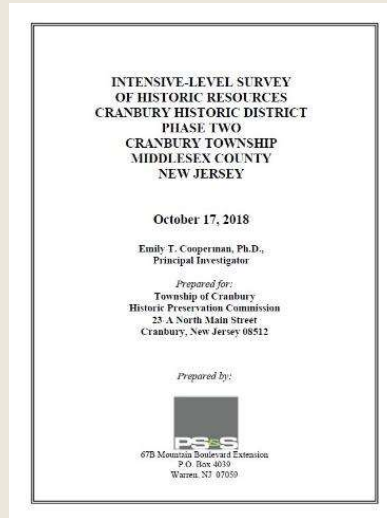
Kristen Herrick, Senior Architectural Historian
January 25, 2024

CRANBURY TOWNSHIP HISTORIC SITES SURVEY UPDATES

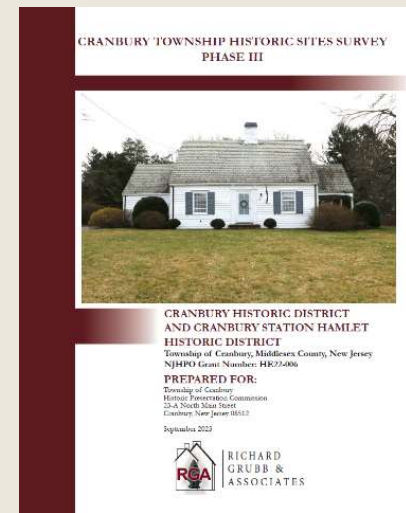
- Updated surveys of the Cranbury Historic District and the Cranbury Station Hamlet Historic District
- Funded through the New Jersey Historic Preservation Office's Certified Local Government Program



2017



2018

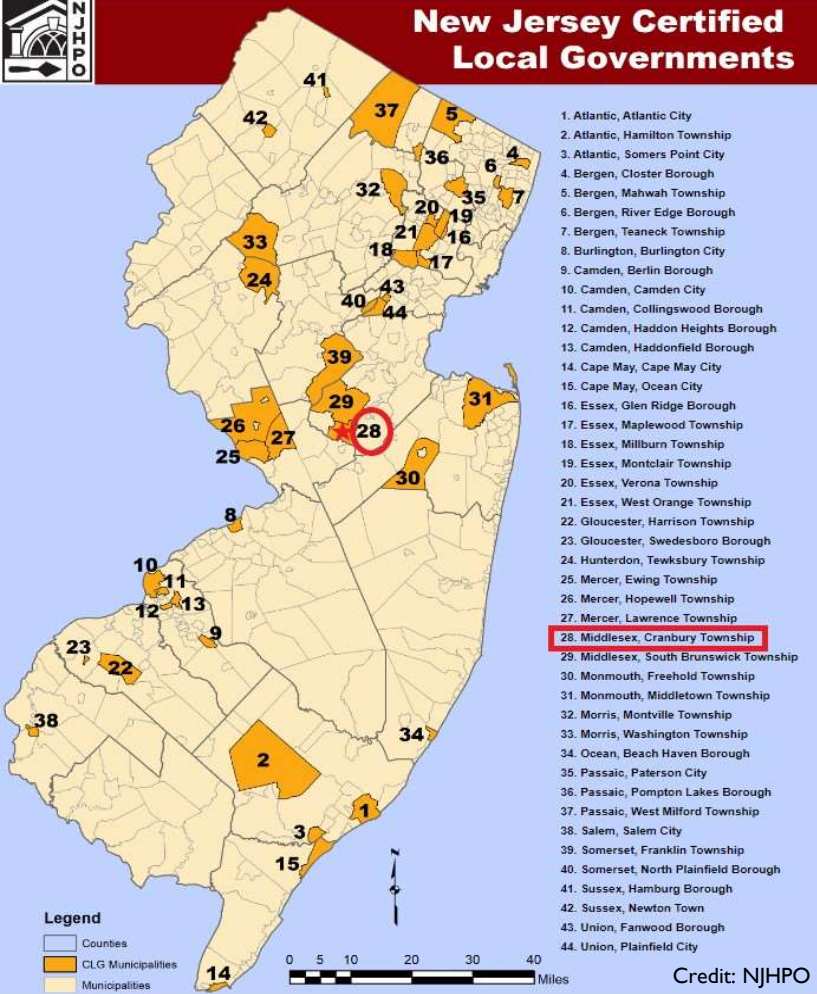


2023





New Jersey Certified Local Governments



CERTIFIED LOCAL GOVERNMENT (CLG) GRANT-FUNDED SURVEYS

- Certified Local Government (CLG) Program administered by the New Jersey Historic Preservation Office (NJHPO), using funds from the National Park Service
- Certified municipalities are eligible to receive grant funding for historic sites survey and historic preservation planning projects, among other benefits



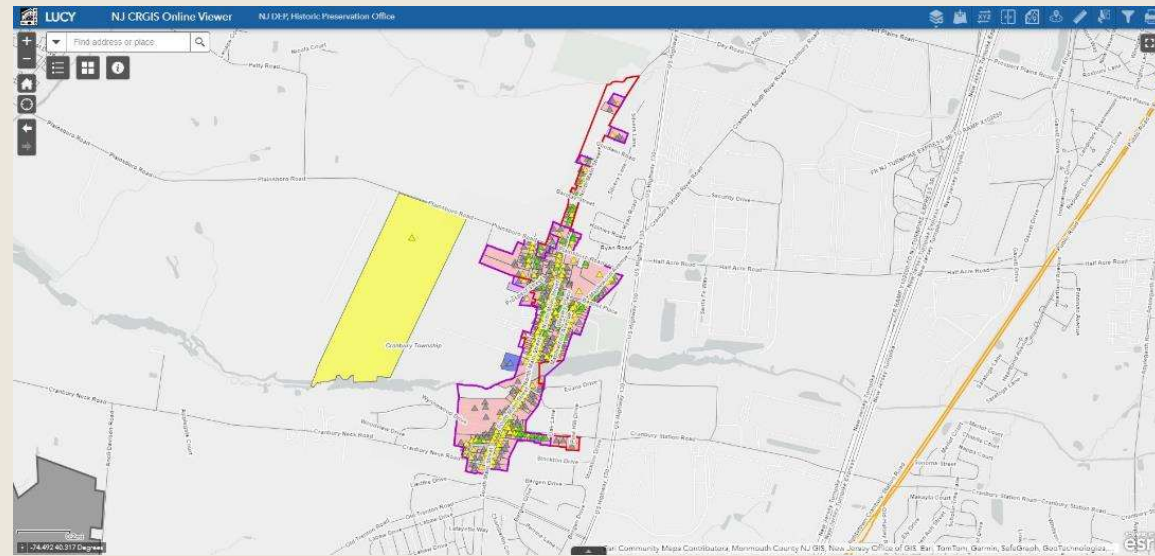
For more information, go to:
www.nj.gov/dep/hpo



RICHARD GRUBB & ASSOCIATES
Historic Architecture • Archaeology • Historical Research

SURVEY PRODUCTS

- Digital photographs of buildings within the survey area
- Survey forms with architectural descriptions and historic narratives
- Microsoft Access database containing all survey data
- Report with survey findings and recommendations
- GIS data for upload into the New Jersey Historic Preservation Office's Online Cultural Resources Map (LUCY)



www.nj.gov/dep/hpo/identify/gis.htm



RICHARD GRUBB & ASSOCIATES
Historic Architecture • Archaeology • Historical Research

WHY UPDATE A HISTORIC SITES SURVEY?

- Buildings change over time
- Historic significance also evolves over time
- New research resources allow for more accurate interpretations of buildings
- Follow current documentation standards and guidelines



Credit: David Szabo

1980 National Register of Historic Places nomination

107 North Main - Rev. Gilbert T. Snowden House, 1794; 1808 Com. Truxton; 2 1/2 story; beveled clapboard; plain boards; 2 chimneys; front porch; iron work trim; L shaped; 5 bays; dentils and frieze decorated. *pic. #29*

2017 Cranbury Township Historic Sites Survey Update Phase I

Description:

The Reverend Gilbert Tennent Snowden House (Snowden House; also known as the Truxton House) at 107 North Main Street is a two-part building consisting of a two-story, two-bay, one-pile core constructed circa 1794 and a two-story, three-bay, two-pile Federal addition south of the core that dates to circa 1810.

The core is the two-story, two-bay section to the north. It is set back from the front wall of the addition. The core's roof is clad with slate shingles. Its frame walls are clad with clapboards. Fenestration is symmetrically spaced, with windows aligned horizontally and vertically. Windows are nine-over-six double hung sash units (possibly original), flanked by louvered shutters. The north elevation is a solid wall; it appears to be clad with aluminum siding.

The larger section of the house is the two-story, three-bay addition (circa 1815), which dominates the main elevation. Its side-gabled roof is sheathed with slate shingles and features cornice returns on the end walls. Two interior brick chimneys are paired across the ridge along the south wall. The section has a molded cornice over a two-part frieze, with a dentil course over a decorative frieze. The walls are stuccoed on the main (east) elevation and clad with wood clapboard on the sides. The main elevation has three two-over-four windows on the second floor with louvered shutters (appearing to date to the late nineteenth century) and two replacement walk-out windows with eight inset lights on the first floor. The entrance consists of a six-panel replacement door topped by a semicircular, segmented fanlight. The entrance is sheltered by a full-façade porch with a late nineteenth century metal filigree cast iron posts and a hipped bronze roof. Brick piers support the porch, and a frame set of stairs leads down to the grade of the front lawn. The south elevation is not visible from the public right-of-way. Character-defining elements of the dwelling include two interior brick chimneys and a dentil frieze band.



RICHARD GRUBB & ASSOCIATES
Historic Architecture • Archaeology • Historical Research

NRHP Criteria for Evaluation

A: Events/Patterns of History

B: People

C: Design/Construction

D: Potential to Yield New Information

CRANBURY HISTORIC DISTRICT



Credit: CentralJersey.com

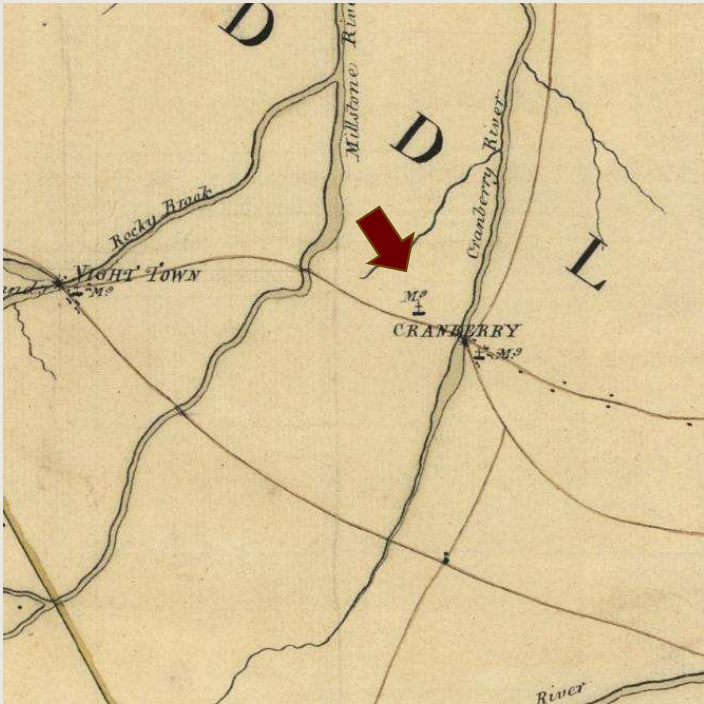
- The district encompasses much of the historic village of Cranbury and contains over 250 residential, commercial, and institutional buildings
- Listed in the New Jersey Register of Historic Places (NJR) on August 9, 1979
- Listed in the National Register of Historic Places (NRHP) on September 19, 1980
- Locally designated on September 26, 1988
 - Inventory of buildings conducted in 1989
- Meets NRHP Criterion A in the area of Commerce and Criterion C in the area of Architecture
- Period of significance begins in 1790 and ends in 1940



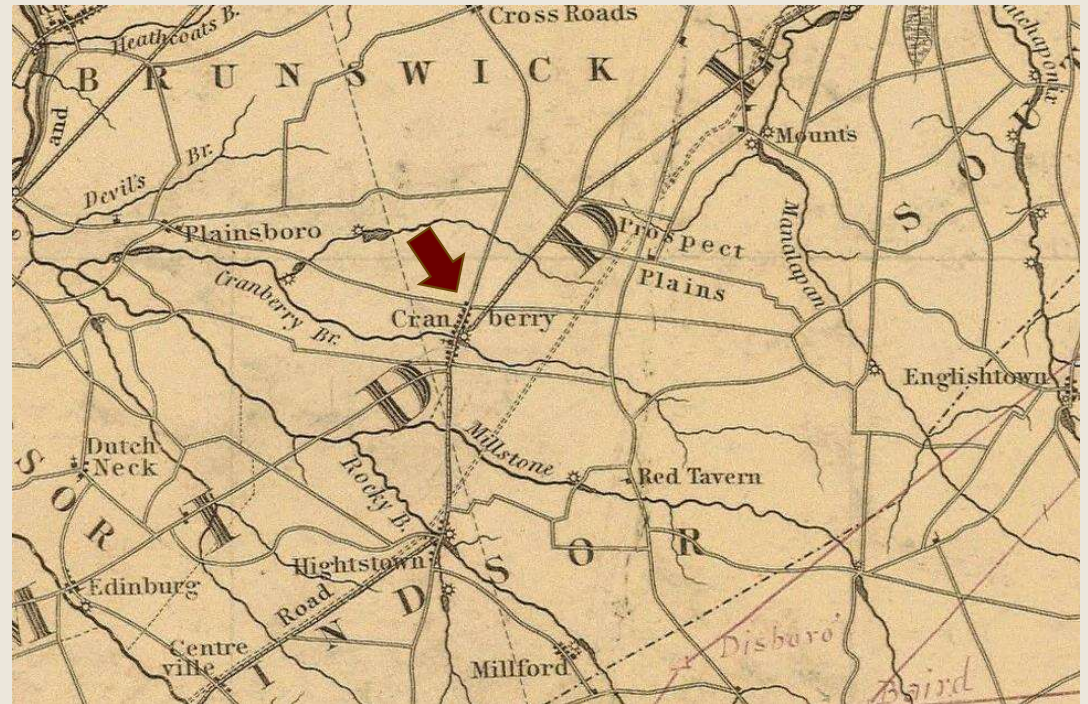
RICHARD GRUBB & ASSOCIATES

Historic Architecture • Archaeology • Historical Research

CRANBURY HISTORIC DISTRICT



1781 John Hills, A Map [of] Middlesex County.



1833 Thomas Gordon, A Map of the State of New Jersey.



CRANBURY HISTORIC DISTRICT

**David Chambers-Benjamin Clark
House, 11 North Main Street**



Credit: David Szabo

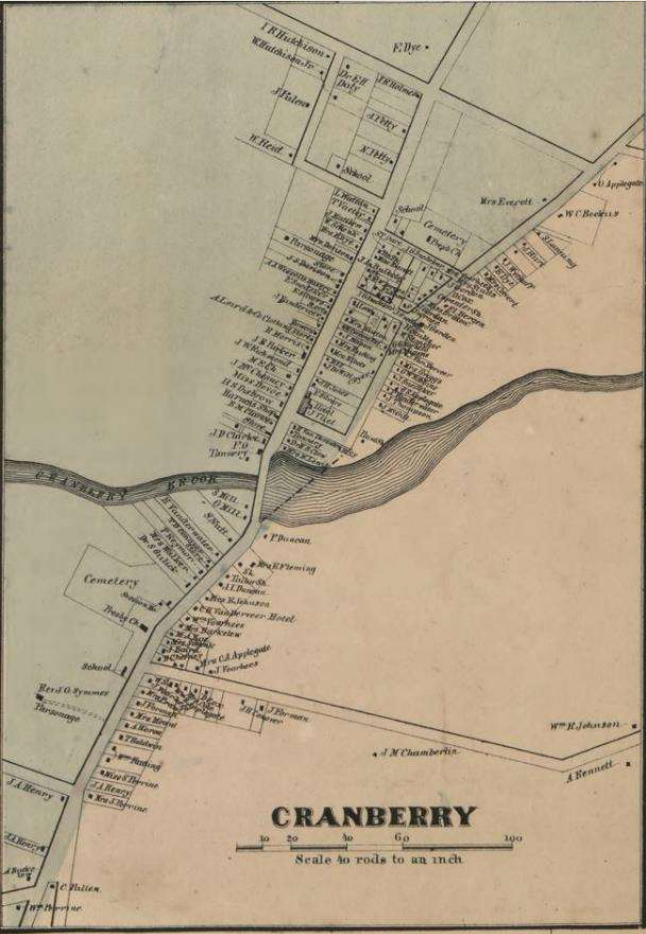
16 South Main Street



Credit: Emily Cooperman



CRANBURY HISTORIC DISTRICT



1861 H.F. Walling, Map of Middlesex County, New Jersey.



1876 Everts & Stewart, Combination Atlas Map of Middlesex County, New Jersey.



CRANBURY HISTORIC DISTRICT

8 Park Place East



Credit: David Szabo

George Farr Farm, 158 North Main Street



Credit: David Szabo



CRANBURY HISTORIC DISTRICT

Bunting House, 5 Prospect Street



54 North Main Street



Credit: David Szabo



RICHARD GRUBB & ASSOCIATES
Historic Architecture • Archaeology • Historical Research

CRANBURY HISTORIC DISTRICT

6 Station Road



Credit: Emily Cooperman

Lewis Stults House, 93 North Main Street

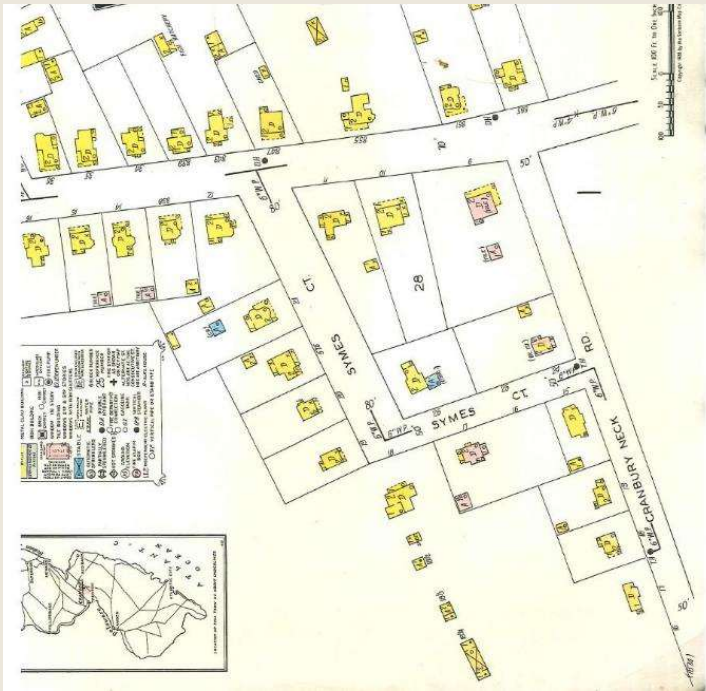


Credit: David Szabo

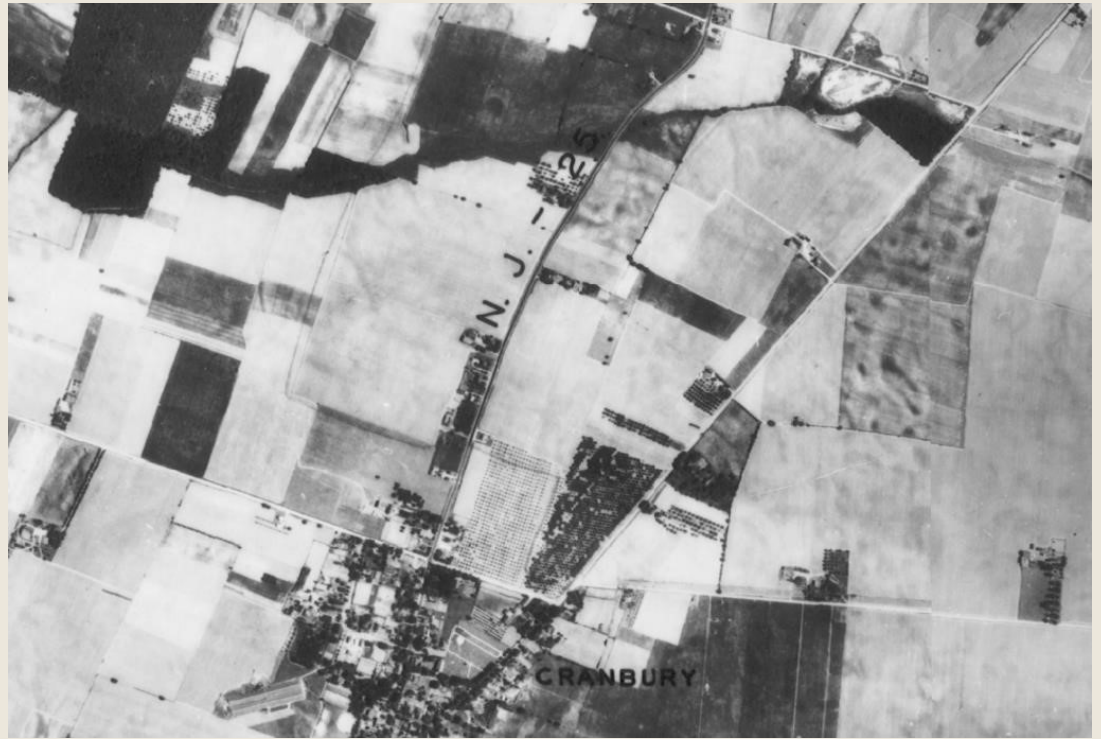


RICHARD GRUBB & ASSOCIATES
Historic Architecture • Archaeology • Historical Research

CRANBURY HISTORIC DISTRICT



1933 Sanborn Fire Insurance Map



1930 aerial photograph



CRANBURY HISTORIC DISTRICT

John J. Bradley House, 10 Bunker Hill Drive



Credit: David Szabo

6 Symmes Court



Credit: Emily Cooperman



RICHARD GRUBB & ASSOCIATES
Historic Architecture • Archaeology • Historical Research

CRANBURY HISTORIC DISTRICT

14 Maplewood Avenue



Credit: Emily Cooperman

4 Prospect Street



Credit: Emily Cooperman



CRANBURY HISTORIC DISTRICT

14 Station Road



Credit: Emily Cooperman

103 North Main Street



Credit: David Szabo



NRHP Criteria for Evaluation

A: Events/Patterns of History

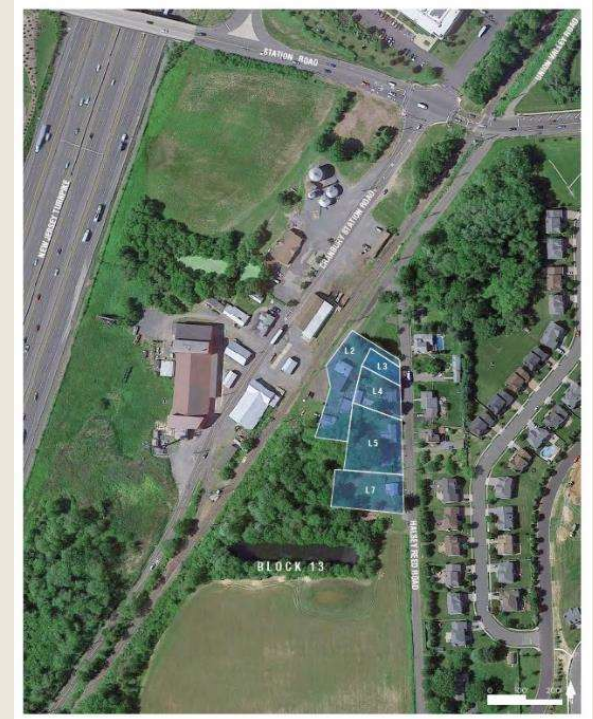
B: People

C: Design/Construction

D: Potential to Yield New Information

CRANBURY STATION HAMLET HISTORIC DISTRICT

- The district includes four Greek Revival-style residences associated with the mid-nineteenth-century hamlet of Cranbury Station
- Locally designated on December 13, 2021
- Significant under NRHP Criterion A in the areas of Agriculture and Commerce and Criterion C in the area of Architecture
- Meets Cranbury Township Historic Site/District Designation Criteria 1, 2, and 7
 - 1: Character, interest, or value as part of the development, heritage or cultural characteristics of the Township, state, or nation
 - 2: Association with events that have made a significant contribution to the broad patterns of national, state or local history
 - 7: Unique location or singular physical characteristics that make a district or site an established or familiar feature

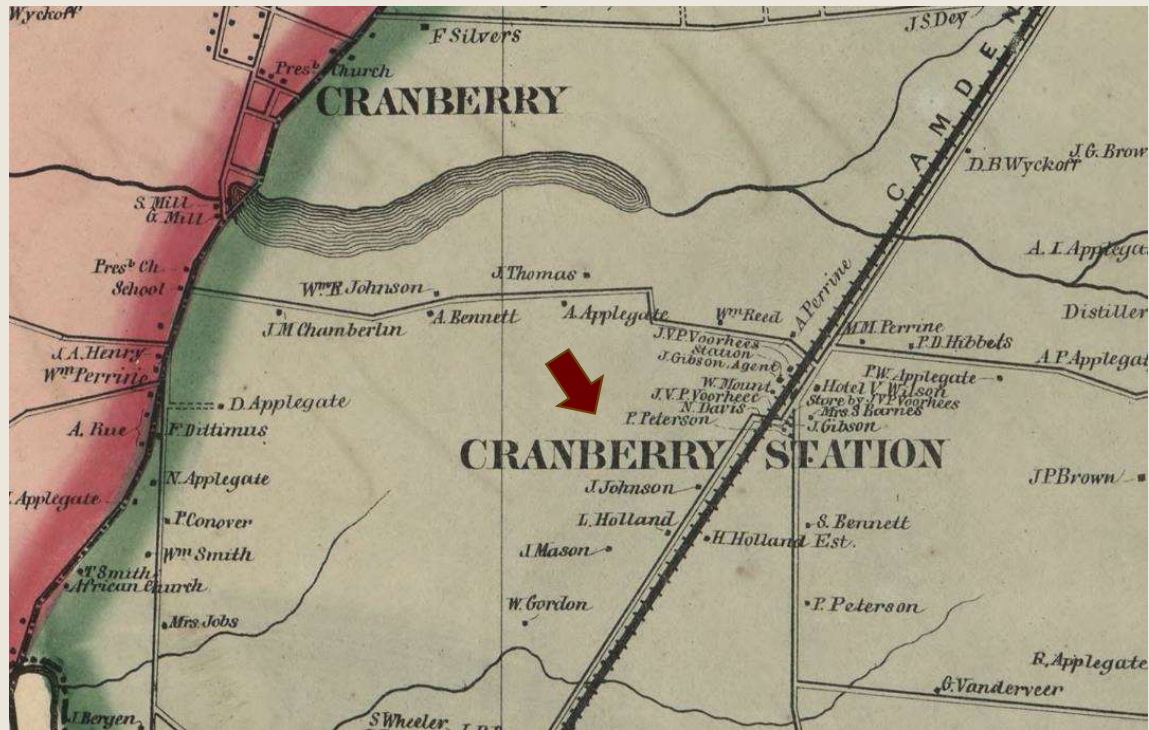


Credit: Phillips Preiss Grygiel Leheny Hughes LLC



RICHARD GRUBB & ASSOCIATES
Historic Architecture • Archaeology • Historical Research

CRANBURY STATION HAMLET HISTORIC DISTRICT



1861 H.F. Walling, Map of Middlesex County, New Jersey.



CRANBURY STATION HAMLET
HISTORIC DISTRICT

88 Halsey Reed Road



90 Halsey Reed Road



92 Halsey Reed Road

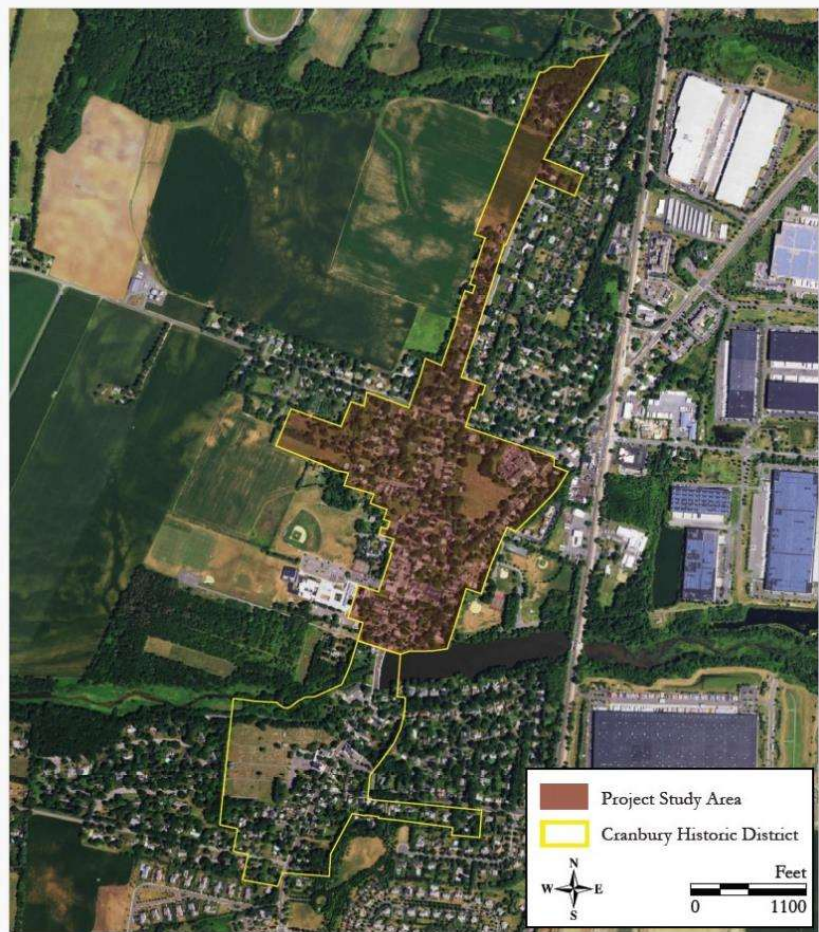


96 Halsey Reed Road



PHASE I SURVEY (2017)

- Covered north half of the Cranbury Historic District
- Surveyed 109 resources in total
 - Key-Contributing: 6 resources
 - Contributing: 86 resources
 - Non-Contributing: 17 resources
- Recommended extending the period of significance to 1940 to include early twentieth-century residences



PHASE I SURVEY (2017)

33 Maplewood Avenue



Credit: David Szabo

49 North Main Street



Credit: David Szabo

9 Prospect Street



Credit: David Szabo



PHASE I SURVEY (2017)

John S. Silvers House, 1 North Main Street



Credit: David Szabo

Brainerd Institute, 96 North Main Street

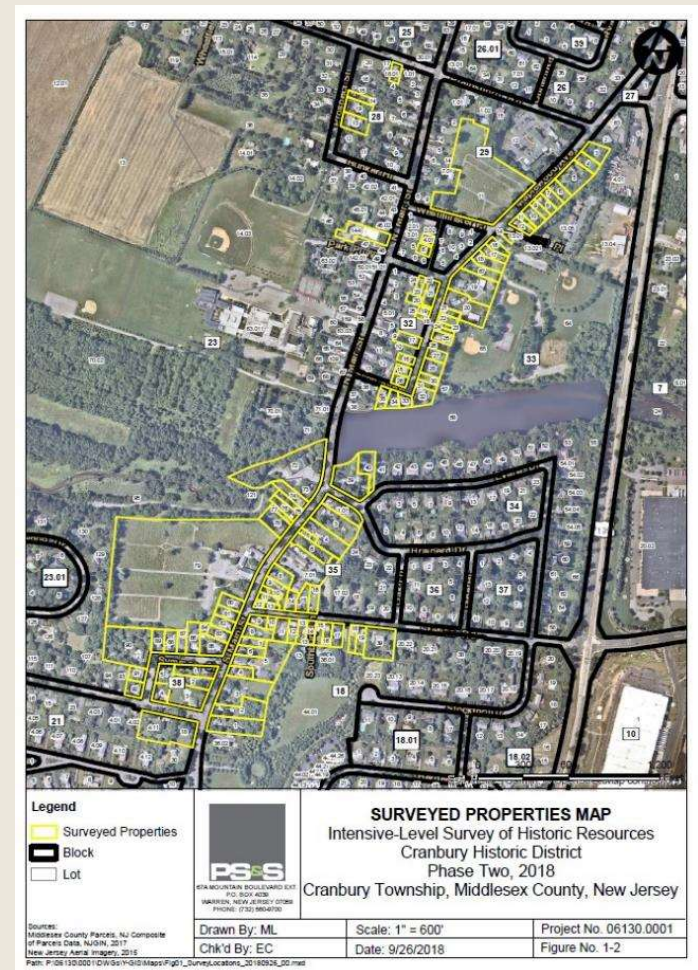


Credit: David Szabo



PHASE II SURVEY (2018)

- Covered south half of the Cranbury Historic District
- Surveyed 110 resources in total
 - Key-Contributing: 5 resources
 - Contributing: 75 resources
 - Non-Contributing: 29 Resources
- Agreed with RGA's previous recommendation to extend the period of significance to 1940



PHASE II SURVEY (2018)

43 South Main Street



Credit: Emily Cooperman

39 South Main Street



Credit: Emily Cooperman

52 South Main Street



Credit: Emily Cooperman



RICHARD GRUBB & ASSOCIATES
Historic Architecture • Archaeology • Historical Research

PHASE II SURVEY (2018)

40 Station Road



Credit: Emily Cooperman

Cranbury Inn, 21 South Main Street

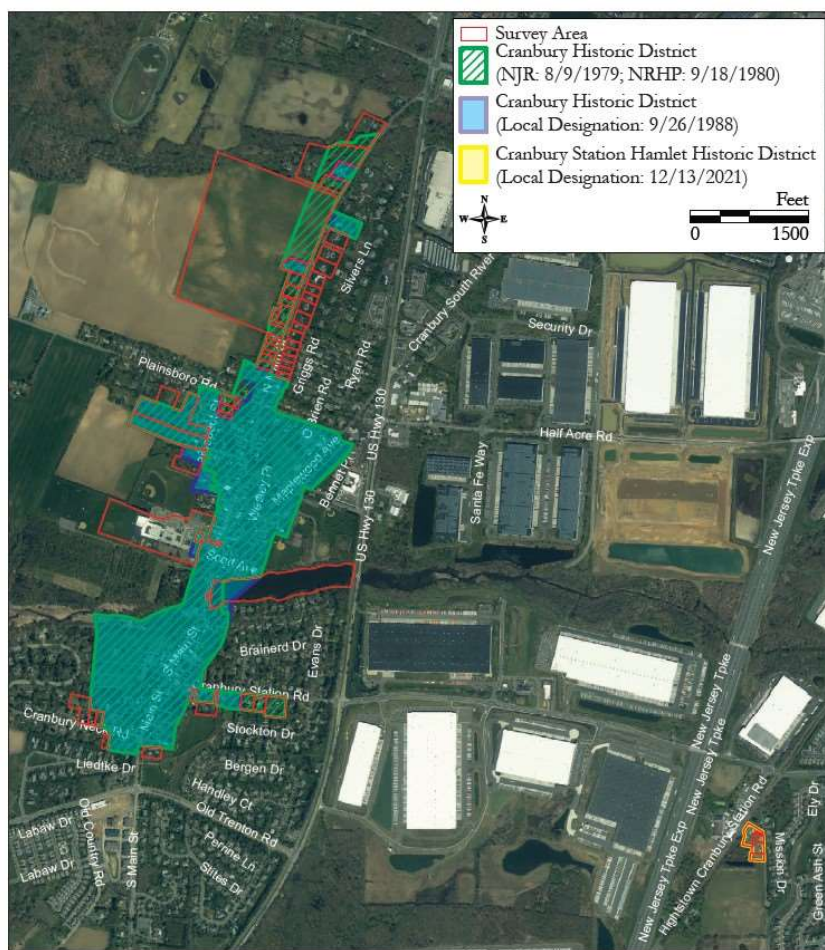


Credit: Emily Cooperman



PHASE III SURVEY (2023)

- Covered areas within and adjacent to the Cranbury Historic District and the entirety of the Cranbury Station Hamlet Historic District
- Recommendations included:
 - Reconcile NRHP-listed and local boundaries of the Cranbury Historic District to create a contiguous district
 - Expand the local boundary of the Cranbury Historic District to include properties that were excluded in previous documentation of the district
 - Expand the local boundary of the Cranbury Historic District to include the full extent of tax parcels that were only partially included in the 1988 local designation



PHASE III SURVEY (2023)

Results

- Surveyed 52 resources for inclusion in an expanded Cranbury Historic District boundary
 - Key-Contributing: 4 resources
 - Contributing: 12 resources
 - Non-Contributing: 35 resources
- Surveyed 4 resources in the Cranbury Station Hamlet Historic District
 - Contributing: 3 resources
 - Non-Contributing: 1 resource



PHASE III SURVEY (2023)

Key-Contributing Resources
Cranbury Historic District

Old Cranbury School,
23 North Main Street



William B. Reed House,
1 Prospect Street



40 Station Road



RICHARD GRUBB & ASSOCIATES
Historic Architecture • Archaeology • Historical Research

PHASE III SURVEY (2023)

Key-Contributing Resources
Cranbury Historic District

Dr. Benjamin S. and Mary H. Van Dyke House, 124 North Main Street



RICHARD GRUBB & ASSOCIATES
Historic Architecture • Archaeology • Historical Research

PHASE III SURVEY (2023)

Contributing Resources
Cranbury Historic District

59 South Main Street



12 Cranbury Neck Road



139 North Main Street



RICHARD GRUBB & ASSOCIATES
Historic Architecture • Archaeology • Historical Research

PHASE III SURVEY (2023)

Contributing Resources
Cranbury Historic District

144 North Main Street



124 North Main Street



8 Cranbury Neck Road



RICHARD GRUBB & ASSOCIATES
Historic Architecture • Archaeology • Historical Research

PHASE III SURVEY (2023)

**Main Street Bridge
over Cranbury Brook**



Contributing Resources
Cranbury Historic District

**North Main Street
Agricultural Field**



Brainerd Lake



PHASE III SURVEY (2023)

Non-Contributing Resources
Cranbury Historic District

115 North Main Street



5 Cranbury Neck Road



RICHARD GRUBB & ASSOCIATES
Historic Architecture • Archaeology • Historical Research

PHASE III SURVEY (2023)

Non-Contributing Resources
Cranbury Historic District

14 Prospect Street



111 North Main Street



RICHARD GRUBB & ASSOCIATES
Historic Architecture • Archaeology • Historical Research

PHASE III SURVEY (2023)

Non-Contributing Resources
Cranbury Historic District

152 North Main Street



103 Plainsboro Road



RICHARD GRUBB & ASSOCIATES
Historic Architecture • Archaeology • Historical Research

PHASE III SURVEY (2023)

Contributing Resources
Cranbury Station Hamlet Historic District




Non-Contributing Resource
Cranbury Station Hamlet Historic District




NEXT STEPS FOR PHASE III SURVEY





CRANBURY TOWNSHIP
Middlesex County, New Jersey

Search  [Subscribe to E-Alerts](#)

[About](#) [Boards & Committees](#) [Departments](#) [Community](#) [Find It Fast](#) [YouTube Channel](#)

- Annual Reports
- Chapter 93
- CoA Application
- Design Guidelines for Cranbury Village Historic District & Sites
- Frequently Asked Questions
- Guidelines for Homeowners Within the Historic District
- Guidelines on Flood Adaptation for the Rehabilitation of Historic Buildings
- Historic Resource Departments for Additional Information
- Historic Resource Survey - Phase One
- Historic Resource Survey - Phase Two
- Historic Resource Surveys-Phase Three
- NJ Historic Property Reinvestment Program - General Program Info CLG
- NJ Historic Property Reinvestment Program Summary

Home » Boards & Committees

Historic Preservation Commission

Robin Tillou, Administrative Officer/Secretary
Phone (609) 664-3122
Fax (609) 395-9272

Volunteer Application to serve on the Committees, Boards, and Commissions

The Historic Preservation Advisory Committee (HPAC) was established in 1988 for the purposes of protecting, enhancing and perpetuating historical resources within the Township. On February 27, 2006, the HPAC repealed Chapter 93 and replaced it with the new Chapter 21 entitled the Historic Preservation Commission (HPC) and a new Chapter 93 entitled "Historic Preservation" pursuant to the N.J.S.A. 40:55D-107 et seq. and which is intended to perform all of the functions of a historic preservation commission pursuant to N.J.S.A. 40:55D-109. The HPC still identifies and designates historic landmarks and districts. One of their duties is to advise the Planning and Zoning Boards on the inclusion of historic sites and landmarks in the recommended capital improvement program.

The Commission is comprised of five members (four-year term) and two alternates (two-year term) appointed by the Mayor. Members must meet classification criteria and may be non-residents.

News & Announcements

- Historic Site Survey Presentation
- Published Notice of Historic Designation and Amendments to Historic Map
- Historic Buffer Amendments
- Proposed Historic Buffer

Historic Preservation Commission Calendar

January						
S	M	T	W	T	F	S
		1	2	3	4	5
7	8	9	10	11	12	13
14	15	16	17	18	19	20
21	22	23	24	25	26	27
28	29	30	31			

All upcoming events


Agendas

- Historic Preservation Commission Special Meeting Notice

LEARN MORE ABOUT THE
CRANBURY TOWNSHIP
HISTORIC SITES
SURVEY UPDATES!

- Digital Phases I, II, and III reports available on Cranbury Township website
- Hard copy of Phase III report on file at the Cranbury Public Library

Cranbury Township Historic Sites Survey Phase III : Cranbury Historic District And Cranbury Station Hamlet Historic District Staff View

by Dunkle, Lauren,
Publication 2023
Language English
Format  Books
Page Number V, 273 PAGES:
Available: 1

library	Call Number	item type	item notes	status
Cranbury Public Library	REF 363.6 CRA	Reference book		Reference Material

www.cranburytownship.org/historic-preservation-commission



RICHARD GRUBB & ASSOCIATES
Historic Architecture • Archaeology • Historical Research

THANK YOU!

KRISTEN HERRICK

SENIOR ARCHITECTURAL HISTORIAN
RICHARD GRUBB & ASSOCIATES

KHERRICK@RGAINCORPORATED.COM

(609) 655-0692 EXT. 1393

RICHARDGRUBB.COM



RICHARD GRUBB & ASSOCIATES
Historic Architecture • Archaeology • Historical Research