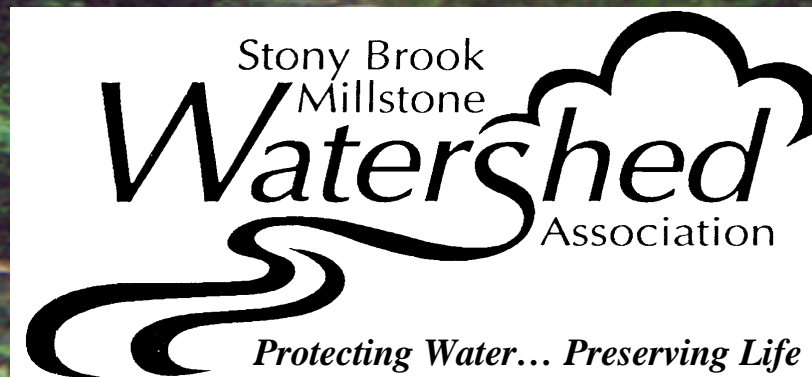


Stream Corridor Ordinance: Municipalities Protecting Our Streams

March 27, 2006



Overview

Stony Brook-Millstone Watershed



Why Protect Stream Corridors?



Scientific Rationale for Stream Corridor Protection



Current Stream Corridor Protection in Cranbury

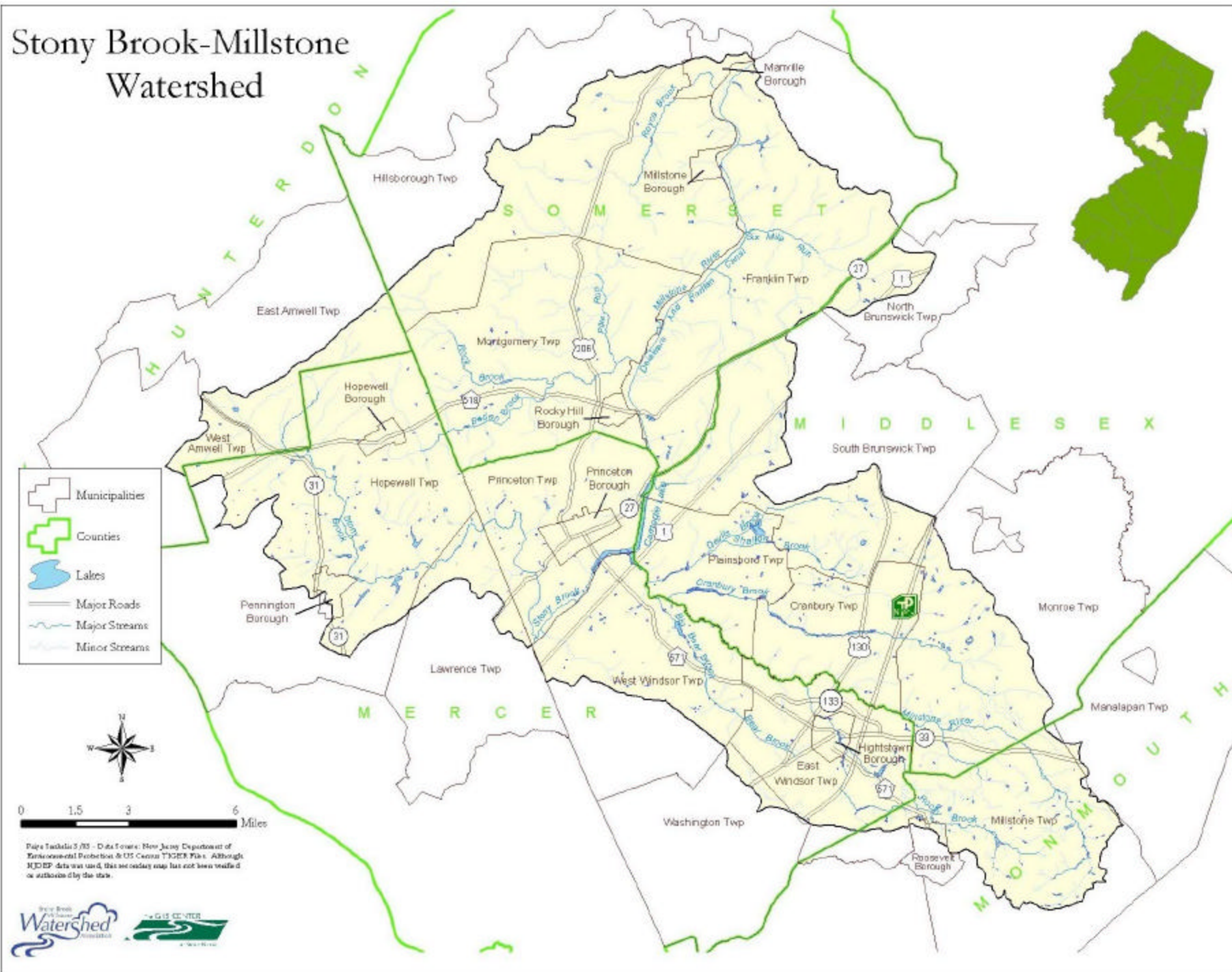


Examples of Stream Corridor Protection
In the Watershed



Implementation

Stony Brook-Millstone Watershed



The Watershed Association

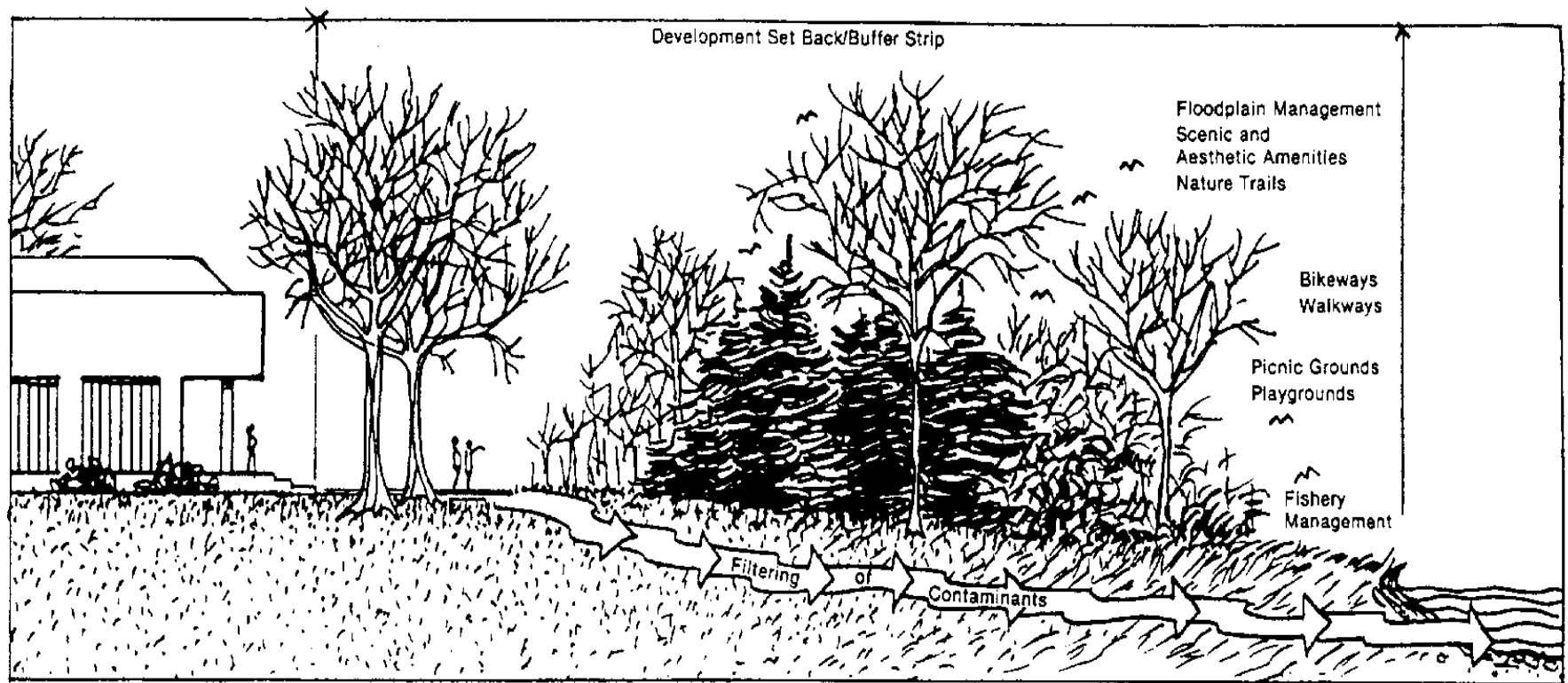


- Preservation
- Education
- Research
- Advocacy

Working With the Watershed Association

- ◆ Assistance Requests
- ◆ Cranbury Brook Characterization and Assessment
- ◆ Open Space walks with Education Center
- ◆ Water Resources Protection Report
- ◆ Municipal Assessment

Stream Corridors

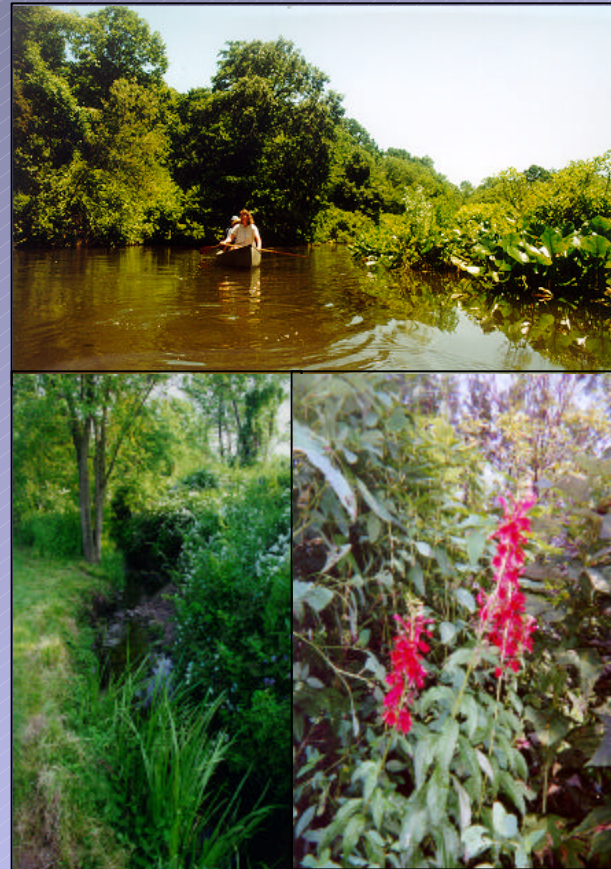


Suburban Stream Corridor

Source: *Stream Corridor Management, A Basic Reference Manual*. New York State Department of Environmental Conservation, Albany, New York 12233. 1985.

Why Protect Stream Corridors?

The best way to stabilize a stream and **protect water quality** is to preserve the stream's surrounding ecosystem.



Why Protect Stream Corridors?

- ◆ 50% of NJ drinking water comes from surface water.
- ◆ 65% of NJDEP's macroinvertebrate monitoring sites are moderately impaired.
- ◆ Recreational activities such as fishing, canoeing, birding and swimming bring in millions of dollars in revenue each year.



Spotted salamander eggs

Scientific Rationale for Stream Corridor Protection

- ◆ Remove sediment, nutrients and pollutants

- ◆ Reduce streambank erosion



Habitat Protection



- ◆ Shade surface waters to prevent excess warming
- ◆ Provide greenway corridors for wildlife
- ◆ Maintain biotic diversity and wetlands

Water Quality Protection

- ◆ Help maintain groundwater recharge and adequate base flow discharges to streams.



Flood Protection



Washington Crossing Park,
September 2004



Trenton, April 2005

Protecting Streams and Properties



- ◆ Adopting a stream corridor ordinance protects water supplies, habitats, and property values.

Current Stream Corridor Protection Cranbury Township

Ch. 87 "Flood Damage Prevention"

Protects the alteration of any watercourse.

Section 88-7 "Special Cases"

Projects of special concern "Shall be any stream encroachment project in perennial streams with over 50 acres of drainage area, which involves either or both of the following:

- Channelization or relocation of a stream for distance over 100 ft or for a distance over 300 ft on either side of a bridge or culvert.
- Loss of more than 6,000 square ft of the existing woodland within 25 feet of the banks."

Stream Corridor Protection In the Watershed

	Buffer Width	Buffer Type	Submission Requirements	Other
East Windsor Twp	100ft from 100-yr floodline	Flexible	Water boundaries; 100-yr floodline; stream corridor; proposed improvements; slopes greater than 12%	Economic hardship; Public need variance
Franklin Twp	50 ft; 100-300ft on various streams	Site Specific	Water boundaries; 100-yr floodline; stream corridor; proposed improvements; slopes greater than 12%; conservation easements; erosion and sediment control plan	-----
Hillsborough Twp	150ft from top of bank and adjacent Critical Areas; excludes some constrained areas buildable areas	Flexible	Water boundaries; 100-yr floodline; stream corridor; existing improvements; proposed improvements; slopes greater than 12%; conservation easements;	Enforcement

Stream Corridor Protection In the Watershed

	Buffer Width	Buffer Type	Submission Requirements	Other
Hopewell Twp	150 ft from top of bank	Flexible	Existing and Proposed Improvements	----
Montgomery Twp	100 ft from 100 yr floodline and adjacent Critical Areas	Flexible	Water boundaries; 100-yr floodline; stream corridor; existing improvements; proposed improvements; erosion and sediment control plan; impact assessment	Economic hardship and Public need variance
Princeton Twp	50 – 100ft on various streams	Site Specific	Water boundaries; 100-yr floodline; stream corridor; existing improvements; proposed improvements; slopes greater than 12%; trees and other natural features; erosion and sediment control plan; impact statement	Economic hardship and Public need variance are considered in light of other factors
South Brunswick Twp	100-200ft on various streams	Flexible	Conservation easement; statement of recognition	Enforcement

Stream Corridor Protection In the Watershed

	Buffer Width	Buffer Type	Submission Requirements	Other
West Amwell Twp	100-200ft on various streams	Site Specific	Water boundaries; 100-yr floodline; stream corridor; slopes >15%; conservation easement	Economic hardship and Enforcement
SBMWA Model Ordinance	100ft from 100-yr floodline	Flexible	Water boundaries; 100-yr floodline; stream corridor; proposed improvement; slopes >12%; conservation easement considered in light of other factors	Economic hardship and Public need variance

Why Communities Are Taking Action



- Prevent clearing or mowing of native vegetation.
- Prevent fences, pools, or sheds from obstructing floodplains.
- Prevent habitat loss.
- Minimize runoff of fertilizer and pesticides into streams.

Implementation

- ◆ Ensure MP has a stream corridor protection and stormwater management section.
- ◆ Ensure adequate notice of public hearings.
- ◆ Public information campaign.
- ◆ Map streams and outline protected areas.
- ◆ Ensure enforcement plan is in place.
- ◆ Consult your municipal attorney.

Thank You!



Jennifer Coffey

Director of Watershed Management

609-737-3735

jcoffey@thewatershed.org